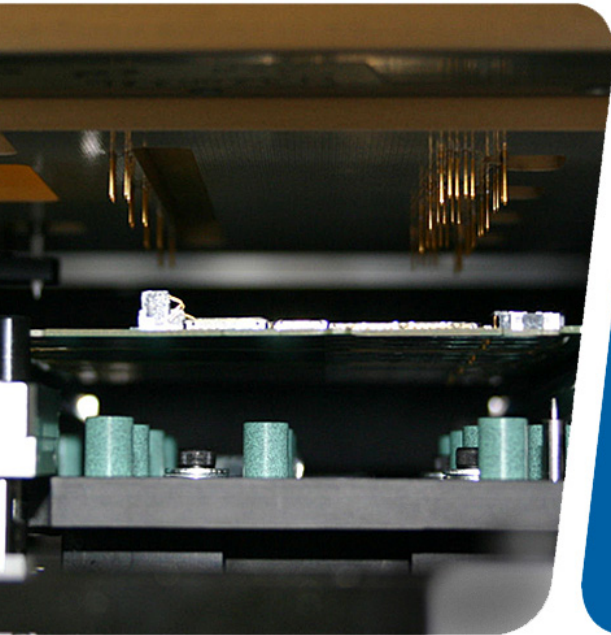


## Cencorp 501 SL



### Efficiency and flexibility for testing with Cencorp Single Line Testers

#### Removing testing bottlenecks

SL501 gives the possibility to use parallel test processes without blocking the line. Due to pass through feature (during test process), capacity can be easily increased.

#### The best choice for low cost automated testing

When you are looking for a solution which ensures that the testing phase is not a bottleneck in your production in terms of a Quality, Cycle time, Change-over time and Maintenance - this machine is your choice!

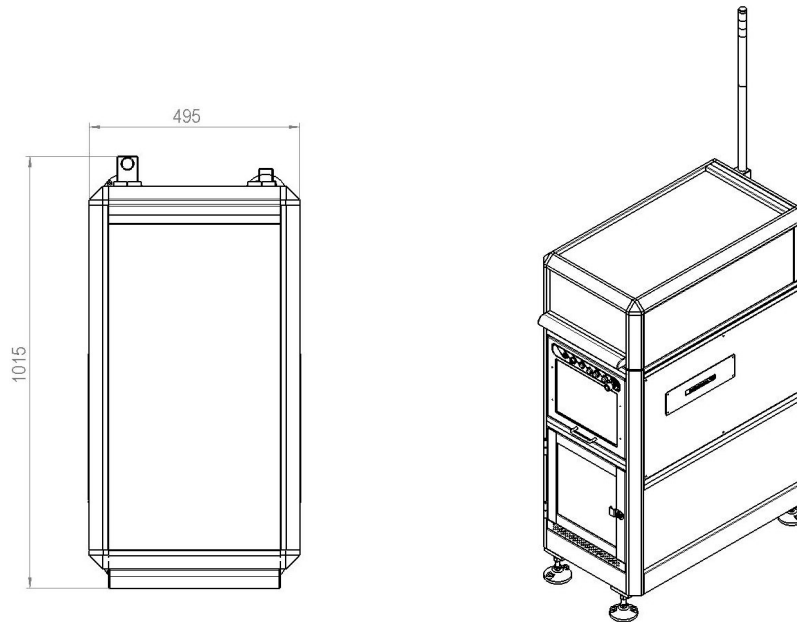
#### Providing flexibility and efficiency

Cencorp has over 10-years of experience built into this 3rd generation test solution. The graphical user interface makes the system easy to program and operate to different test processes. It is easily connected to a different test platforms and it's not dependent on special hardware or software.

#### Platform & module strategy

Our standard solutions are based on one platform and module strategy. If required, customer specific modules can be created to meet the testing process requirements. In effect, more testing power can be packed in a smaller space. The SL501 is used in functional testing, camera checking, software downloading, boundary scan tests, RF measurements and different electrical measurements

# Technical data 501 SL



### Machine Dimensions

Width: 495mm (19.5")  
 Depth: 900+115mm (35.4"+4.5")  
 Height: 1405mm (55.3") without beacon  
 2055mm (80.9") with beacon  
 Weight: 135kg (300 lbs)

### Board Handling

Min PCB size: 60 x 70 mm (2.36" x 2.76")  
 Max PCB size: 350 x 450 mm  
 (13.78" x 17.71")  
 Width easy to adjust  
 PCB Thickness: 0.6-4.0 mm  
 (0.02" - 0.16")  
 PCB transfer time: <1.5 s  
 Transfer protocol: SMEMA  
 Transfer height: 900 ±30 mm  
 (35.4" ± 1.18")  
 Bottom clearance: 30 mm (1.18")  
 Top clearance: 70 mm (2.76")  
 Edge clearance: 3 mm (0.12")

### Palette Handling

Max palette size: 350 x 450 mm  
 (13.78" x 17.71")  
 Easy adjustable Width: 100 - 350 mm  
 (3.94" - 13.78")

### Electrical Service Requirements

Voltage EU (USA): 230 (110) VAC10%  
 Frequency EU (USA): 50 (60) Hz  
 Branch circuit size: 10A  
 Average power consumption: 500VA

### Pneumatic Service Requirements

Pressure: 5-7 bar (73-100 PSI) ±10%  
 clean, dry air  
 Approx. air consumption: 100 l/min

### Environmental Requirements

Operating temperature: 10 ... 40 °C  
 (50... 200°F)  
 Operating humidity (r.h.): 30% ... 85%

### Machine Control

PLC: OMRON

### Base Standards

Light tower

### Graphical User Interface

Colour Touch Screen

### Test Adapter

Width: 490 mm (19.29")  
 Length: 400 - 550 mm (15.75" - 21.65")  
 Pin load max: 100 kg (220 lbs)

### Fixture Specification

Connection to adapter: Genrad type  
 Conveyor speed: 13 m/min (42.65 ft/min)  
 Connection interface: Changeable  
 Handshaking: RS232 / DIO

### Options

Barcode support: 1D or 2D  
 Camera reader  
 PC  
 Display  
 Keyboard